

VMware Shutdown Wizard
User's Manual

Table of Contents

1. Introduction.....	2
2. VMware Shutdown Wizard install, quick start, stop, and uninstall	2
2-1. Install	2
2-2.Quick Start.....	6
2-3.Stop	7
2-4.Uninstall	7

1. Introduction

VMware Shutdown Wizard is a shutdown software specially designed for VMware system. It will receive the shutdown command from ViewPower Pro or ViewPower to turn off all the running virtual client units with VMware system.

2. VMware Shutdown Wizard install, quick start, stop, and uninstall

2-1. Install

Required software: VMware Infrastructure Client.

File name for VMware Shutdown Wizard software: VPVMShutdownWizard.tar.gz

1) Upload software to VMware ESX system.

- a. Execute VMware Infrastructure Client
- b. Click inventory button from navigation bar to select the main category of virtual machine.

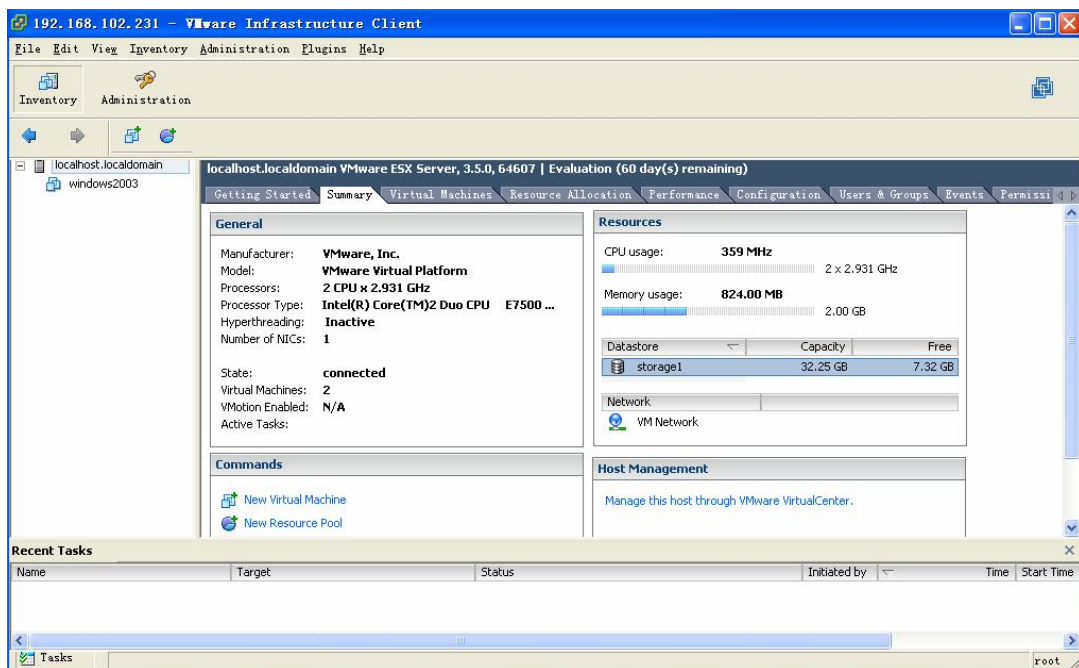



Figure 1.

- c. Click "Summary" tab. Then double click Datastore icon  storage1 in "Resources" column as shown above. (storage1: Name of the Datastore which may be different under different configuration). It will pop up Datastore Browser Window as shown in figure 2.

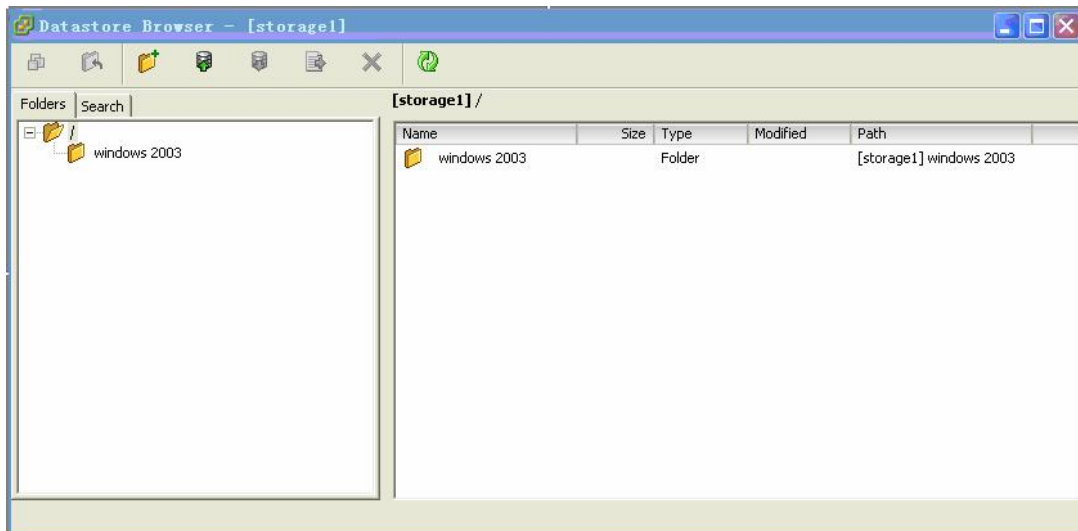



Figure 2.

- d. Click  icon from tool bar, and then select "Upload File..." (Refer to Figure 3)

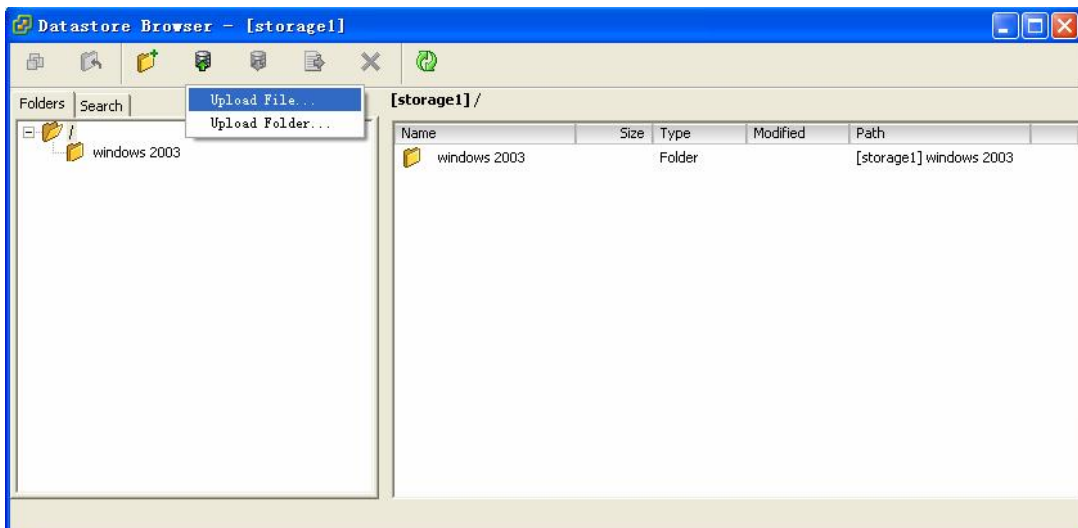


Figure 3.

- e. A dialog of "upload item" will pop up. (Refer to figure 4)

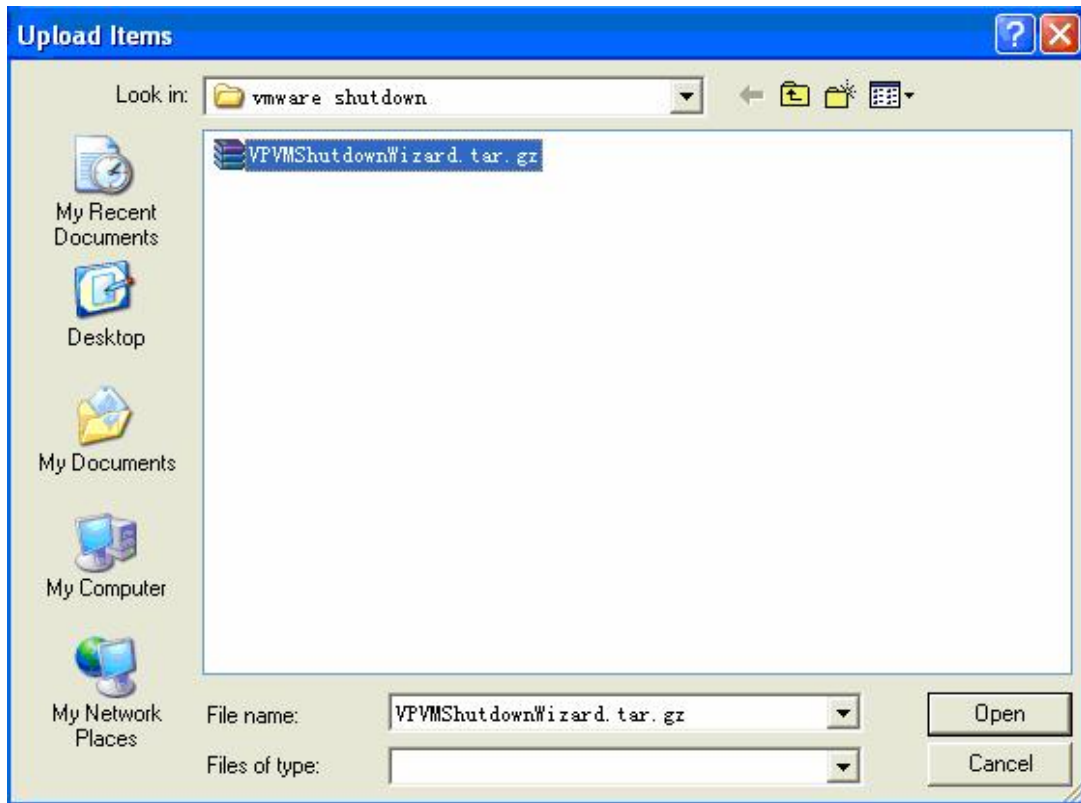


Figure 4. "Upload Items" dialog

- f. Select the VPVMShutdownWizard.tar.gz file and click "Open" button to upload the compressed package as shown in Figure 5.

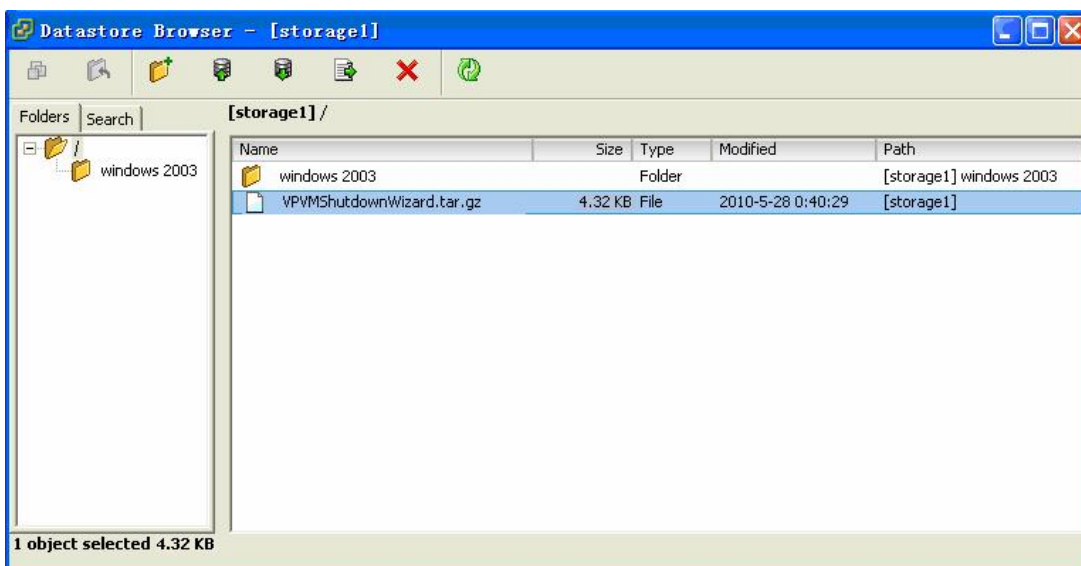


Figure 5

2) Install Software

- a. Log in to Console page of VMware ESX system. Then, enter the following address "cd /vmfs/volumes/storage1/". This can also be varied due to different storage name. (shown in figure 6)

```

[root@localhost root]# cd /vmfs/volumes/storage1/
[root@localhost storage1]# ls
VPVMShutdownWizard.tar.gz  windows2003
[root@localhost storage1]#
[root@localhost storage1]#

```

Figure 6.

- b. Run "tar -zxvf VPVMShutdownWizard.tar.gz" command to unzip the compressed file. Refer to figure 7.

```

[root@localhost storage1]# tar -zxvf VPVMShutdownWizard.tar.gz
VPVMShutdownWizard/
VPVMShutdownWizard/VPVMShutdown/
VPVMShutdownWizard/VPVMShutdown/ShutdownWizard/
VPVMShutdownWizard/VPVMShutdown/ShutdownWizard/ShutdownWizard
VPVMShutdownWizard/VPVMShutdown/ShutdownWizard/shutdownsystem
VPVMShutdownWizard/VPVMShutdown/ShutdownWizard/UNINSTALL
VPVMShutdownWizard/VPVMShutdown/ShutdownWizard/shutdownscript
VPVMShutdownWizard/VPVMShutdown/ShutdownWizard/stop
VPVMShutdownWizard/VPVMShutdown/ShutdownWizard/run
VPVMShutdownWizard/INSTALL
[root@localhost storage1]#

```

Figure 7.

- c. Key in "cd VPVMShutdownWizard" to access the VPVMShutdownWizard catalogue. Then run "./INSTALL" to install and auto run the software. Refer to figure 8.

```

[root@localhost storage1]# tar -zxvf VPVMShutdownWizard.tar.gz
VPVMShutdownWizard/
VPVMShutdownWizard/VPVMShutdown/
VPVMShutdownWizard/VPVMShutdown/ShutdownWizard/
VPVMShutdownWizard/VPVMShutdown/ShutdownWizard/ShutdownWizard
VPVMShutdownWizard/VPVMShutdown/ShutdownWizard/shutdownsystem
VPVMShutdownWizard/VPVMShutdown/ShutdownWizard/UNINSTALL
VPVMShutdownWizard/VPVMShutdown/ShutdownWizard/shutdownscript
VPVMShutdownWizard/VPVMShutdown/ShutdownWizard/stop
VPVMShutdownWizard/VPVMShutdown/ShutdownWizard/run
VPVMShutdownWizard/INSTALL
[root@localhost storage1]# cd VPVMShutdownWizard
[root@localhost VPVMShutdownWizard]# ls
INSTALL  VPVMShutdown
[root@localhost VPVMShutdownWizard]# ./INSTALL
VMware Shutdown Wizard V1.00Beta
copy file to /vmfs/volumes/datastore1/VPVMShutdownWizard/..
initialize environment
install over!
[root@localhost VPVMShutdownWizard]#

```

Figure 8.

- d. After installation , the default path is set to "/vmfs/volumes/datastore1/VPVMShutdown" as shown in Figure 9.

```

/vmfs/volumes # cd /vmfs/volumes/datastore1/VPVMSshutdown
/vmfs/volumes/4be43da2-37001d70-b601-000c290a167a/VPVMSshutdown # ls
ShutdownWizard
/vmfs/volumes/4be43da2-37001d70-b601-000c290a167a/VPVMSshutdown # cd ShutdownWiza
rd/
/vmfs/volumes/4be43da2-37001d70-b601-000c290a167a/VPVMSshutdown/ShutdownWizard #
ls
ShutdownWizard  init_cfg          shutdownscript  stop
UNINSTALL       run              shutdownsystem

```

Figure 9.

2-2. Quick Start

It will run automatically after installation. If it's not automatically running, you may key in the "ps -e | grep ShutdownWizard" (for ESXi 5.0 : "ps -C | grep ShutdownWizard") for double checking. Once it's not running as requested, key in "cd /vmfs/volumes/datastore1/VPVMSshutdown/ShutdownWizard/" to enter installation menu and then enter "./run" to manually start the software.

```

/vmfs/volumes/4be43da2-37001d70-b601-000c290a167a/VPVMSshutdown/ShutdownWizard #
ls
ShutdownWizard  init_cfg          shutdownscript  stop
UNINSTALL       run              shutdownsystem
/vmfs/volumes/4be43da2-37001d70-b601-000c290a167a/VPVMSshutdown/ShutdownWizard #
./run
/vmfs/volumes/4be43da2-37001d70-b601-000c290a167a/VPVMSshutdown/ShutdownWizard #
ps -C | grep ShutdownWizard
4310 4310 ShutdownWizard          /vmfs/volumes/datastore1/VPVMSshutdown/Wizard/./VP
VMShutdown/ShutdownWizard/ShutdownWizard
/vmfs/volumes/4be43da2-37001d70-b601-000c290a167a/VPVMSshutdown/ShutdownWizard #

```

Figure 10.

2-3. Stop

Key in the path of "cd /vmfs/volumes/datastore1/VPVMShutdown/ShutdownWizard/" and then, run the command of "./stop" as shown below.

```
/vmfs/volumes/4be43da2-37001d70-b601-000c290a167a/VPVMShutdown/ShutdownWizard #  
ls  
ShutdownWizard  init_cfg          shutdownscript  stop  
UNINSTALL       run              shutdownsystem  
/vmfs/volumes/4be43da2-37001d70-b601-000c290a167a/VPVMShutdown/ShutdownWizard #  
pwd  
/vmfs/volumes/datastore1/VPVMShutdown/ShutdownWizard  
/vmfs/volumes/4be43da2-37001d70-b601-000c290a167a/VPVMShutdown/ShutdownWizard #  
./stop  
Stop VMware Shutdown Wizard V1.00Beta!
```

Figure 11.

2-4. Uninstall

Key in the path of "cd /vmfs/volumes/datastore1/VPVMShutdown/ShutdownWizard/" to enter the installation menu. Then, run the command of "./UNINSTALL" to uninstall the software. (Refer to figure 12)

```
/vmfs/volumes/4be43da2-37001d70-b601-000c290a167a/VPVMShutdown/ShutdownWizard #  
./UNINSTALL  
Uninstall VMware Shutdown Wizard V1.00Beta  
wait for a moment.Don't interrupt,please.  
remove ShutdownWizard ...  
uninstall ok.  
sh: getcwd: No such file or directory  
(unknown) #
```

Figure 12